

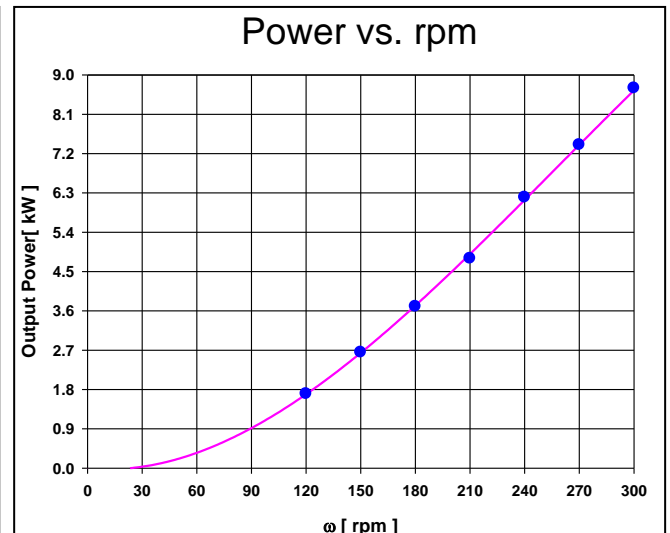
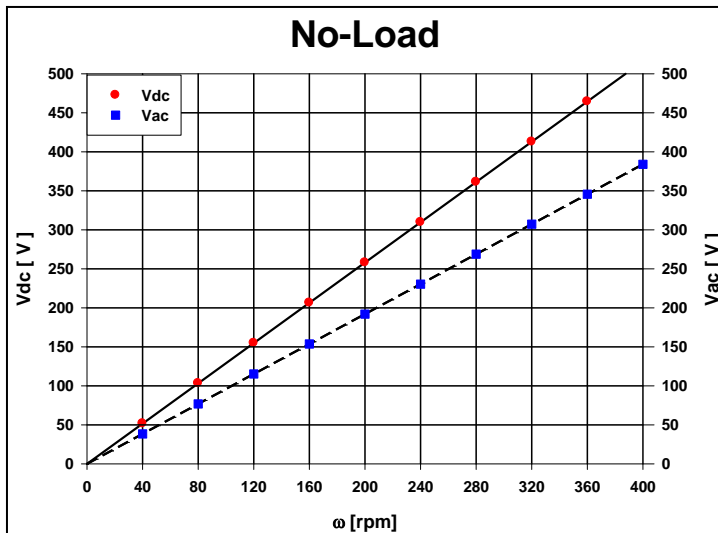
PM Generator For Small Wind Turbine & Pico Hydro

Slotless, Low Cogging Torque, High Efficiency...

Model : SWEG6K-AB240-I

	Symbol	units	
Output power	P _o	kW	6
Rated speed	ω	rpm	240
Output Voltage	E	V	3phase, 220(Line-Line)
Max. Efficiency	η	%	90
Rotor			Permanent magnet
Number of Pole	-	-	30
Speed Constant	K _E	Vdc/rpm	1.29
Resistance at 20 °C(Line-Line)	R _T	Ω	0.95
Inductance (Line-Line)	L	mH	0.76
Rotor Inertia	J	Kg-m ²	0.92
Maximum Temperature	C _{Max}	°C	150
Winding			Wye
Starting Torque		Nm	< 0.25
Shaft Play-Axial		mm	< 0.2
Gen. Weight	W _g	Kg	128

Note: Shaft-Stainless Steel, Al-Housing, Bearing- NSK or NTN



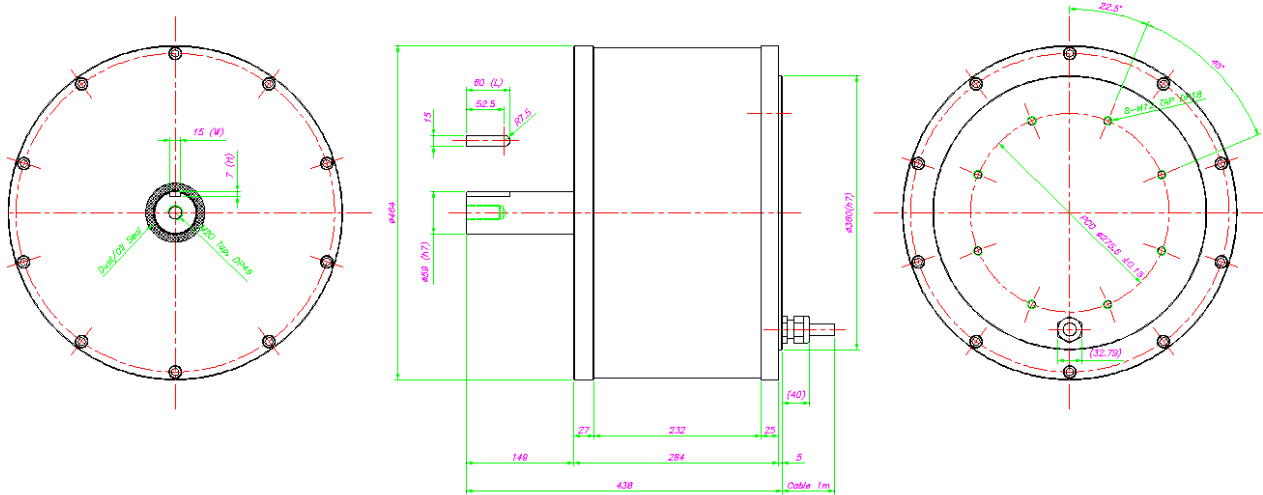
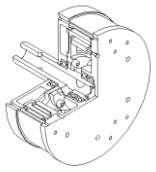
SEOLTECH CO.,LTD.

29, Seongseogongdanbuk-ro 65-gil, Dalseo-gu, Daegu, Korea 704-900

Tel : 82.53.580.7400 Fax : 82.53.580.7499

E-mail: skywindearth@skywindearth.com & st@seoltech.com





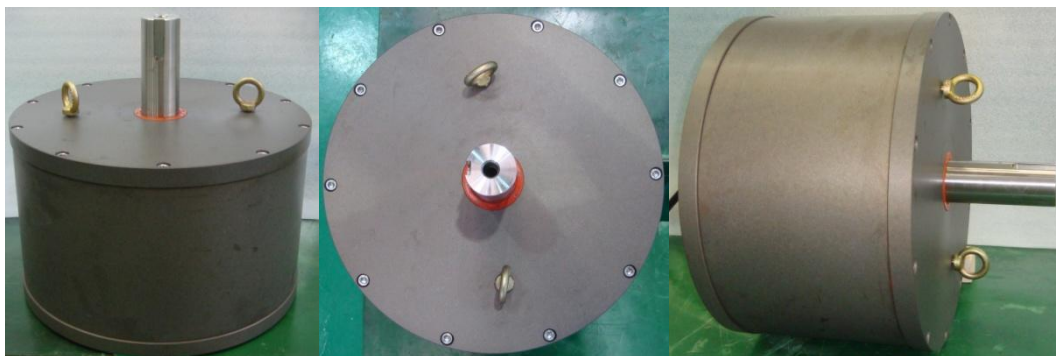
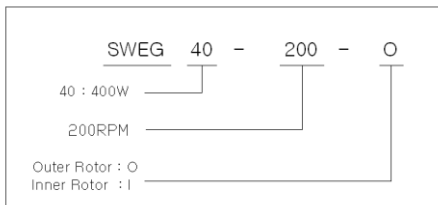
Checklist Category-

1. Dimension and Tolerances
2. Output power, Voltage, Rpm
3. Insulation Resistance Examination
4. Starting Torque
5. Output wire 2.5SQ X 4C
(red, white, black, green/earth)

Result

GEN. SERIAL NO. : ST10

● Ordering Information



SEOLTECH CO.,LTD.

29, Seongseogongdanbuk-ro 65-gil, Dalseo-gu, Daegu, Korea 704-900

Tel : 82.53.580.7400 Fax : 82.53.580.7499

E-mail: skywindearth@skywindearth.com & st@seoltech.com

